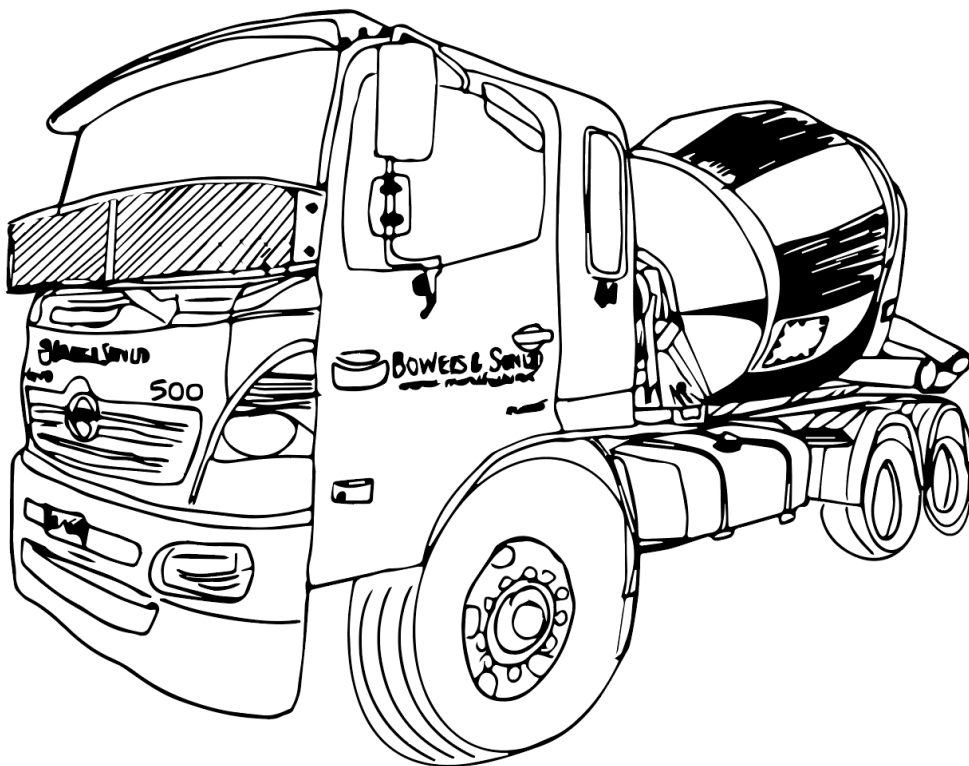


BEST PRACTICE

CONCRETE DELIVERIES TO SITE

Bowers & Son | Te Awamutu & Otorohanga



1852 Alexandra Street • Te Awamutu | 64 Otewa Road • Otorohanga

07 871 5209 | www.bowersconcrete.co.nz

WORKING TOGETHER

Bowers & Son Limited is committed to providing an environment where our workers and anyone associated with our workers understands risk and shall make every attempt to reduce it so far as is reasonably practicable.

We recognise that compliance alone does not prevent exposure to risk, we encourage our workers to communicate, collaborate and consult with you about the hazards identified on your site.

For more information please see www.bowersconcrete.co.nz or email admin@bowersconcrete.co.nz

OUR EXPECTATIONS

To ensure our workers and your people get home in the same condition they arrived in, our team expect that:

- You have a plan in place to manage our trucks around pedestrians and other vehicles
- Access to your work site is suitable for the size and weight of our truck.
- The person in charge of the work site identifies themselves to our truck drivers.
- If possible, a spotter should be made available onsite to guide our trucks into position, using the Concrete NZ Hand Signals – see our website for guidelines
- Spotters should ensure they have cleared the area of personnel and should consider the use of high visibility clothing for easy identification against the work environment
- There must be adequate clearances for vehicles from power lines.
- No overhanging structures including trees
- Underground services are identified
- Delivery points are clear of any building materials and debris.
- Our drivers will operate the truck's discharge controls. It is at the driver's sole discretion if they wish to assign the operation of controls to the customer or their agent.
- Any damage sustained, or improper use affecting the release of concrete, due to poor operation of the discharge control by anyone other than our drivers will be the responsibility of the customer.
- Methods in place for preventing the tracking of mud or clay into public roadways.
- Wash out facilities available on site away from waterways, drains and natural water sources and/or flora and fauna.
- No additional chutes can be added to our trucks other than the truck's own chutes.
- Trucks moving on sites with extended chutes must be assisted by a safety spotter to prevent harm or associated property damage that may occur due to uncontrolled chute movement.
- Ladders on our trucks should only be accessed by our workers.

If you think there are any issues with your work site and access, give us a call to talk through solutions.

We can conduct a site visit or suggest interventions like concrete pumping or using a mini dumper. Should we arrive onsite and the access looks to be beyond the limitations of our trucks, presents a greater risk than we allow our drivers to take and there are no alternative methods as suggested above, we may refuse delivery at your cost.

Making sure you have addressed our expectations before a delivery will not only reduce the risk of harm, but mean the job is more efficient and productive for everyone.



5m³ 3 axle Ready Mix Truck

Length: 7.0m

Width 2.5m

Height: 3.65m

Chute: 2.75m

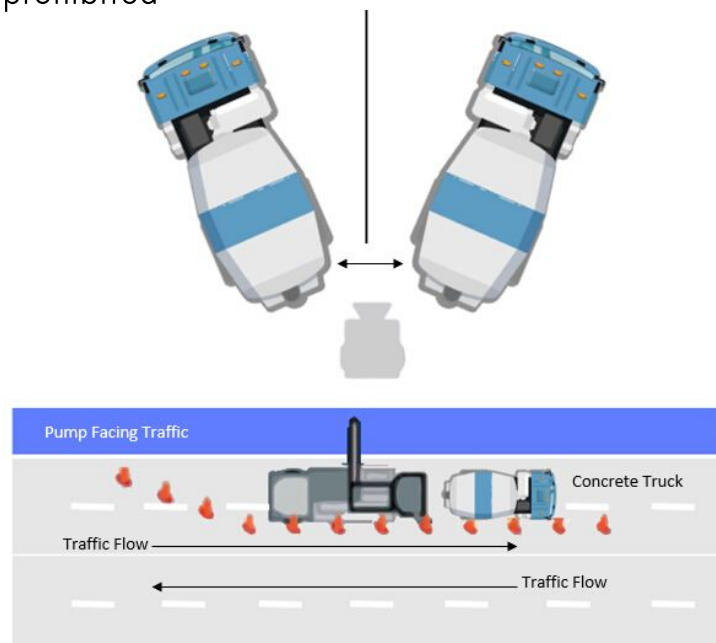
A fully loaded 5m³ truck with weight approximately 21.5 tonnes, depending on the type of concrete.

ADDITIONS TO LOADS

Our drivers are not permitted to add water or any other additives to the load (unless under special written arrangement) beyond what is required to provide designed slump.

CONCRETE PUMPS

- Grates shall be in place, earth straps used and
- safety chains on discharge elbow.
- A spotter shall be present to assist in reversing onto a concrete pump or skip.
- Where two trucks are required, adequate space (600mm minimum) between the trucks and other stationery objects must be provided.
- A full hopper on the pump must be maintained to avoid blow back due to air locks.
- The pump hopper should be at a height that allows gravity flow of concrete into the hopper.
- Concrete pumps shall be set up on site so that discharging concrete trucks do not have to breach traffic regulations to reverse up to the
- hopper.
- Concrete pumped back into trucks by any concrete pump or the use of air pressure to clean lines out is prohibited



CAUTION:

BE AWARE THAT EXPOSURE TO WET CONCRETE CAN CAUSE SEVERE BURNS
TAKE ALL RECOMMENDED PRECAUTIONS AND IF EXPOSED, FOLLOW THE TREATMENT
GUIDELINES OUTLINED IN THE CONCRETE NZ SAFETY CARD AVAILABLE ON OUR
WEBSITE.

For more information please see www.bowersconcrete.co.nz or email admin@bustersconcrete.co.nz